

Blackberry

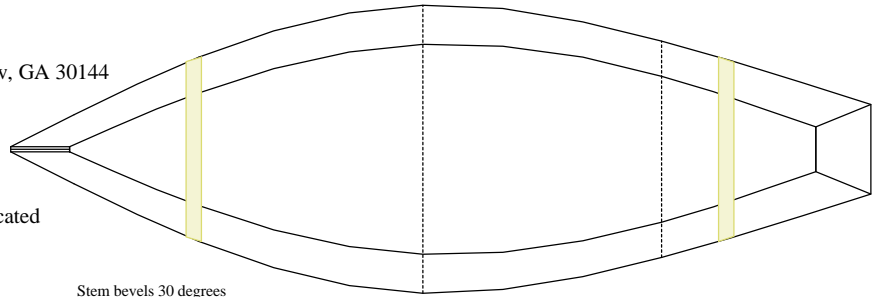
11' 2 1/2" X 4' 0", Working displacement 250-350 lbs.

Designed By John Bell, 4460 Dunmovin Drive, Kennesaw, GA 30144
 email: jmbell@mindspring.com
 Phone: 770/592-2165

All 1/4" (6mm) Plywood, stitch and glue construction.

Gunwales two courses 1 1/2" x 3/4". Two thwart as indicated in plan view. Rowing seat a movable box.

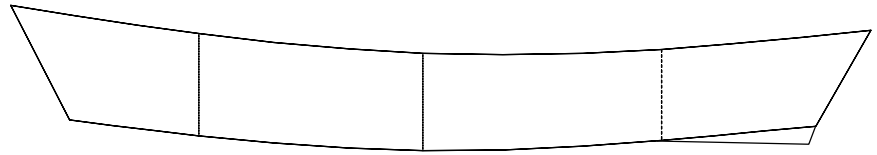
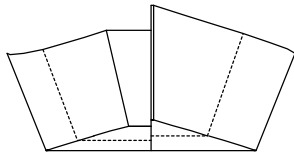
Skeg from 3/4" solid stock. Size to suit after testing.



Stem bevels 30 degrees

Bevel transom side framing 20.3 degrees

Bevel transom bottom framing 30 degrees.



Vertical plotting information is on 12" centers unless otherwise indicated with a horizontal mesurement.

